



Broadcaster

“Helping Each Other Grow!”

Michiana Master Gardeners Association

October 2007

Features This Issue!

Pages

From the President's Desk	1-3
Autumn Garden Calendar	4
Day Minder - October-November	5
Who Would Have Thought?	7-8
Inside the Extension Office	9-14
Felder Rushing	15-17
“rest of the story”	17-18
Master Gardener State Meeting Report	18-21
Eva Shaw	22-23
Community Garden Note	25-26

FROM THE PRESIDENT'S DESK

As the growing season comes to a close, I am reminded gardening continues. It really never stops, it may slow down some but a true gardener can never really put it out of their mind. They just have to be puttering around as long as weather permits and when conditions are such that they cannot get outdoors, they are making plans to implement as soon as they can.

The activities of the Michiana Master Gardeners Association like wise never comes to a stop. The Board and Standing Committees meet eleven months of the year; however, during the off month business is still being conducted. A brief status report, in the order in which they occur, may give some insight into the association's ongoing activities.

The Annual March Seminar/MMGA Dinner Meeting Committee has been working since last April on preparations for the 2008 meeting. The location, speaker, and caterer have been selected. Work on advertisement and tickets along with the final touches necessary to make this a successful event are proceeding.

April will be the Annual Tree Sale. The committee has worked with vendors to determine what varieties are available, selected the varieties to be offered this year and ordered the trees. They have designed, printed and started distribution of the order forms. Work on publicity and press releases are ongoing and believe it or not, the orders are already starting to come in!

July will be the Annual Garden Tour. This committee has several activities they are working on. The garden selection group has visited gardens in July and August of this year, contacted garden owners, and worked with the map, sign and traffic control group to put together a list of gardens to be submitted to the Garden Tour Committee. From this list gardens to be included on the 2008 Tour will be selected. This selection will be done this month (October) so letters can be mailed to the owners notifying them their garden has been selected. Crafters are getting into production of items for sale at the Hospitality Center. The Publicity and Media group are contacting the appropriate people in the press and radio to publicize the Tour. Contacts are being made to sell Ads in the Ticket Books and the list goes on.

July 18-26 will be the Fair dates for 2008. The committee has met to review the Open Class Horticulture Entrant requirements to clear up some of the confusion some people experienced in the past. Plans are underway for arranging the exhibits so the area for holding seminars can be moved out of the restroom traffic area, also plans for setting up Ag hall for Fair week are being made. Schedules are being made for the number of people needed and working hours of Building Hosts/Hostesses, exhibit entrant receiving personnel, and judging assistants. Trophies will soon have to be ordered. Publicity advertising the opportunity and inviting people to show what they have produced will be prepared and distributed soon after the first of the year.

August will be the Garden Tour Garden owner's appreciation dinner. The program committee has tentative plans for the menu and evening program for this event.

Early Fall 2009 the Michiana Master Gardeners Association will be hosting the State Master Gardeners Meeting. Many, many hours have been spent in investigating what will be required in hosting an event of this size. The Committee has contacted other Master Gardener organizations that have hosted this event in the past to learn from their experience. They have been in communication with Purdue University about what they require and what assistance they provide. Facilities in the area had to be visited and costs evaluated. Once the organization decided it was feasible, a building had to be selected and approved prior to agreeing to undertake this responsibility. This has been done and the committee is moving ahead. It is amazing how fast this is coming together.

If you would like to be a member of any of the standing committees, you can contact the individual Committee Chairperson or any MMGA Officer or Board Member.

As these events near, you will have opportunity to volunteer to help make them successful and to gain volunteer hours.

I hope this gives every member a peek behind the organizational curtain, and gives you a sense of pride to be a member of the Michiana Master Gardeners Association.

-Paul Miles

Last night, there came a frost, which has done great damage to my garden...it is sad that Nature will play such tricks on us poor mortals, inviting us with sunny smiles to confide in her, and then, when we are entirely within her power, striking us to the heart.

~Nathaniel Hawthorne



Autumn Garden Calendar for October/November **~B. Rosie Lerner, Purdue University CES**

Indoor Plants and Activities

- Water Indoor plants less frequently, and discontinue fertilizer as plants slow down or stop growing for the winter season.
- Move plants closer to windows or to sunnier exposures, such as west and south facing windows, if plants are dropping many leaves.

Woody Landscape Plants and Fruit Trees

- Keep plants, especially newly planted stock, well watered until the ground freezes.
- Have soil ready for mounding roses for winter protection. Do not mound or cover the roses until after leaves drop and soil is near freezing, usually in late November or early December.
- Prevent frost cracking or sunscald by wrapping tree trunks with commercial tree wrap. Young, thin-barked trees such as maples and many fruit trees are especially susceptible.
- Remove dead, diseased, or damaged branches.
- If you are planning to order a “live” Christmas tree, prepare its planting hole before the soil freezes. Mulch the area heavily to prevent freezing, or dig the hole and put the fill in a protected, nonfreezing area, such as a garage or basement.

Lawns

- Rake fallen leaves from lawn, particularly larger sized leaves, such as maple and sycamore; they can smother the lawn as they become wet and mat down.
- Late fall fertilizer can help keep the lawn greener longer and boost early spring recovery.



Day Minder . . . Watch Us Grow!
October 2007

24	Wed.	Master Gardener Class - Extension Conference Room, Vegetables (Faye Lutz)	1:00- 4:30 PM
30	Tues.	MMGA Monthly Meeting - Ag Hall "CoCoRaHS: What is it?" by Jerry Martin	6:00 PM
31	Wed.	Master Gardener Class - Extension Conference Room, Woody Ornamentals (Jeff Burbrink)	1:00- 4:30 PM

November 2007

7	Wed.	Master Gardener Class - Extension Conference Room, Water Gardening (Diane Pippenger)	1:00- 4:30 PM
14	Wed.	Master Gardener Class - Extension Conference Room, Animal Control (Andrew Westfall)	1:00- 4:30 PM
19	Mon.	MMGA Board Meeting - Extension Conference Room	12:30 PM
20	Tues.	Master Gardener Class - Extension Conference Room, Landscaping (Terry Cegielski)	1:00- 4:30 PM
22- 23	Thur. -Fri.	Purdue Extension - Elkhart County Office Closed - Thanksgiving Holiday	All Day Yes!
27	Tues.	MMGA Monthly Meeting - Ag Hall Thanks-for-giving Potluck Dinner & Food Drive	6:00 PM
28	Wed.	Master Gardener Class - Extension Conference Room, Flowers (Linda Mayberry)	1:00- 4:30 PM

Email Update:

Judy Marquart - jds gardenpetals@bnin.net

Linda Carris - LindaRay223@comcast.net

Upcoming Meeting Topics

October 30th - Speaker to be announced. Garden Tour
Boutique items for sale.

November 27th - Thanks-for-giving Potluck Dinner &
Food Drive.

December – No meeting in December - Happy Holidays

Boutique Items for Sale

The October meeting will feature the items which did not sell at the Garden Tour Boutique. Please be sure to bring some extra cash for these beautifully handcrafted items. They will make great Christmas gifts or just put them away for next years garden.



*Don't forget to turn
back your clock on
November 4, 2007!*

PLEASE NOTE CHANGE: Please submit future articles for the Broadcaster to Teresa Evans at taevans@purdue.edu. Thank you!

Who Would Have Thought?

By: Vickie Estep

I recently did a shoe garden presentation for the residents of Riverside Terrace in Elkhart. I did my research since I thought I should have several ideas to choose from. I decided we would plant Hens and Chicks, Polka Dot Plant and Moss Rose. The tenants were to provide the shoes and the soil and I would buy the plants. So far so good. It was a busy time for me so I went to the nursery and paid for the plants asking them to hold them for me until the following week.

When it was presentation day I stopped at the nursery and picked up the plants, putting them lovingly into my trunk. I ran into another store to purchase a couple of door prizes and headed on my way. After carrying in 3 flats of plants, prizes and my example cowboy boots, I set up my presentation.

I gave my talk and we were ready to plant. The residents were enthusiastic but most were either wheel chair bound or otherwise handicapped so I told them I would bring the plants to them and they could choose what they wanted to plant in their shoe. When I got to the last table with the plants still in flats for easier carrying, a visitor appeared. As I reached into the flat to pull out some Pink Polka Dot Plant the "visitor" jumped out of the flat. You guessed it, the visitor was a frog that had hitched a ride from the garden center!

The woman in the wheel chair to whom I was showing the plants shrieked as the frog jumped onto the table next to her. I tried to scoop it up but of course he wasn't going to leave gracefully. So I ran around the table and cupped him in my hands (I say him because only a male would cause such a ruckus) and then another resident volunteered to usher him back out to nature.

The moral of the story is when you need a good laugh just let nature provide. Otherwise known as "Don't forget to look for frogs in your flats."

Earth is here so kind,
that just tickle her with a
hoe and she laughs with a
harvest.

- Douglas William Jerrold



UPDATES TO THE MEMBERSHIP DIRECTORY

There are no changes to the membership this month. It is time to think about renewing your membership. You should have received your membership dues and renewal form in the mail. Please take a few minutes to check the directory to see if your address and phone, as well as your email address are correct before you send in your form. If not, please take a few minutes to update your information. Thank you.

INSIDE THE EXTENSION OFFICE

Submitted by: Kate Rink

(August Edition)



We had a variety of calls this month in the extension office. Not a lot of repetition of common problems which makes answering calls more interesting and sometimes more challenging. Weather related problems often make answering those questions a piece of cake. Just blame it on the weather! In June, we couldn't buy a rain. In August, the rains came down and the floods came up! Either too dry or too wet! What on earth would we American's have to talk about if we didn't have the weather to be our conversation starters! Of course, as gardeners, the weather is everything. Green is better than brown, by all means!

One of the most interesting calls that came in this month was from a co-worker of Gwen Ferland's. Not knowing what to call it for use of a better word, he found this object in his yard. It looked like it could be a nut but then again it looked like it could be a fruit. The fruit looked like it was actually growing out of an acorn nut. The homeowner did not have much information other than they were all over his yard. Some pictures were taken and because it was such a strange looking specimen, it was sent to Purdue for positive identification. The information received identified it as an acorn-plum gall. Remember our training? A gall is an abnormal growth of plant tissue. What causes a gall? In this case it was an inconspicuous group. Over 100 species of insects feed on nuts of North American trees, including acorns produced by oak trees.

Acorn insects lead fascinating lives. Many play important ecological roles as consumers of acorns, as food for insect-eating animals or as pioneers that hollow out acorns which other insects and small animals can use as homes. The insect that prompted the investigation in this case, is called a gall wasp. They are some of the oldest known acorn eaters. Adult females lay their eggs in female flowers of oak trees in the spring, which causes the galls to develop in or on the acorn. Gall wasp larvae live in and feed on the plant tissue inside the galls. The acorn plum gall is quite conspicuous. It is a blood-red globe (which looked like a berry), about an inch in diameter, that is attached to the acorn cup. Many of these external galls drop off the acorns in the autumn. Gall wasps usually do not cause extensive damage to acorns. In a nutshell (no pun intended), that is good news to the homeowner who had this curious looking thing in his yard!

Rhubarb cream pie, rhubarb crisp, rhubarb-strawberry pie all are very good if you have a nice crop of rhubarb. A client has had a great rhubarb crop over the past 15 years but it has gradually dwindled down to small, spindly, narrow stalks with no infestation of insects or disease. She wondered what was wrong with it and how she could get the large thick stalks to grow again. Our MG advised that in order to keep her rhubarb productive, it needed to be divided or trimmed every 4 to 5 years leaving 4 or 5 buds per plant. Rhubarb is a heavy feeder and should be fertilized with 1 cup of 10-10-10 per plant each spring.

Manure is an extremely valuable source of organic matter as it helps to conserve moisture, preserves the soil structure and makes nutrients readily available. An application of composted manure or leaves is beneficial in late fall and early winter, but careful attention should be taken to not cover the crowns as this may promote rotting.

We had two calls about Cicada killer wasps. One just wanted an identification of the wasp and the other wanted to know how to kill it. No, no, it's a good guy! Cicadas feed on plants, trees and shrubs in our yards causing extensive damage. The female cicada killer wasp uses her sting to paralyze the cicada and carry it back to the nesting hole. There she lays an egg on it and closes it in a nesting cell with dirt. In one or two days the eggs hatch and the cicada serves as food for the grub. The elimination of cicadas by the cicada killer wasp is definitely a good thing. They are a natural control on cicada populations and are therefore a direct benefit to the deciduous trees upon which cicadas feed. It's quite something to see if you have never seen the wasp carrying the cicada. The cicada is twice the size of the wasp. It's like an ant carrying a potato chip across the floor. While cicada killers may seem frightfully large, they are not aggressive and rarely sting unless they are grasped roughly, stepped upon or caught in clothing. Males do not even sting. They are non-aggressive towards humans and fly away when swatted at, instead of attacking. Another reason to call this particular wasp a good guy.

The name arborvitae or "tree of life" dates from the 16th century and the French exploration of the Saint Lawrence River. Jacques Cartier learned from the Indians along the river how to boil the tree's branches and foliage to make a concoction that was rich enough in vitamin C to treat scurvy afflicting members of his expedition. In gratitude for curing their sickness, the French carried the tree home in 1534 where it was named "l'arbor de vie" by the King of France, and planted it in medicinal plant gardens. As a consequence, eastern arborvitae is thought to be the first American tree introduced to Europe. Even today an over-

the-counter elixir made with arborvitae extracts is used to treat the common cold. Knowing all that makes this homeowner ever protective of the beautiful arborvitaes that adorn her yard. The fact that she had some with vertical splits near the base of the tree was cause for a call to the office. Bark splitting can occur in response to various environmental factors at different times of the year. Splits can occur on the trunk of the tree as well as on branches. Trees which are most susceptible to this type of injury are those which are thin-barked, such as certain fruit trees. Fluctuating growth conditions may also cause splitting of bark. Dry weather (which slows growth) followed by wet or ideal growth conditions, may cause excessive or vigorous amount of growth leading to splits in the bark. Does that sound like our summer? Positively!

When a split in a tree occurs, research shows that tree wound paints are of little value in helping a tree to callus over. A tree growing with good vigor usually calluses over on its own without help. Encourage vigor in the tree with yearly spring fertilizer applications and be sure to provide adequate irrigation in hot dry weather. Bark splits will often close over completely leaving only a slight ridge in the trunk where callus tissue has been produced. Hopefully, her "tree of life" will recover with proper care and give her many more years of enjoyment.

That's about it for this month. I wonder what September's calls will bring. It's always a new ball game, a few new pitches, a few strike outs and some great home runs. That's our hotline!



INSIDE THE EXTENSION OFFICE (September Edition)

Our calls coming into the extension office this month have gradually become less and less. The dwindling in numbers amounted to only 5 calls between August 14th and September 6th. Consequently, there isn't a lot to report! Our growing season will soon be over. Some may have experienced a slight frost already when the temperature dipped to 38 degrees a week ago. A rebound set a record on September 24th with 92 degrees. These varying temperatures become our cue that September is a very fickle month.

A gentleman brought in a legless creature that he had never seen before in his 82 young years. His pursuit for identification brought our Master Gardener to the Purdue entomology web site. Information revealed that it was a slug uncommon to our area due to the nature of its size. How it got here was the question at hand. A theory came to mind that it may have been transplanted here from the South via a shipment to one our big box stores. Slugs are soft-bodied, grayish or mottled, slimy creatures that can sometimes measure up to 4 inches in length. Most slugs, however, become only 1 1/2 inches or so. They can become pests in and around the home or in greenhouses, not only because they are inherently ugly, but also because they can damage plants. In most cases, slugs feed on molds and decaying organic matter but may also feed on the foliage of plants. Hostas are a particular favorite. They must have a large amount of moisture to survive and they prefer darkness. Ideal habitats include damp basements, beneath boards, trash and other debris. The chemical control method is a bait with Metaldehyde or Mesurool. Most garden centers supply slug and snail bait. A non-chemical control

method is a container filled with beer. A small can filled at least 1/2 in. deep and sunk into the ground at 4 feet intervals is a means of attracting slugs. A drunken stupor becomes its alcoholic demise. Sanitation methods help to control also by eliminating their hiding places. Removing rotting boards and dead plant debris around precious plants discourages their activity.

While we are on the subject of creatures, another client brought in an extremely funny looking caterpillar. The Department of Entomology identified this caterpillar as a saddleback. The description of this very unusual worm is quite lengthy. It is about an inch long. Its color is purplish-brown with a purplish saddle shape on its green back. The weird part of its body is the four large projections or tubercles that stick out from the sides of its body. These are poisonous spines. Contact with them causes a burning sensation and inflammation that can be as painful as a bee sting. The irritation can last for a day or two with possible nausea during the first few hours. The site of contact reddens and swells much like a bee sting. The saddleback caterpillar is a general feeder and is generally found on shade trees and ornamental shrubs in late summer. They like basswood, chestnut, cherry, plum and oak leaves. You would not have an inclination to hand pick this worm off of a tree or shrub. Its porcupine appearance is a subtle, common-sense reminder - Do Not Touch. I hope our client handled the worm with care and was not stung.

A Goshen man was looking for an identification of a particular weed he was finding rather prevalent in his lawn. He knew it was a wild grass of some sort. He was correct but a quick and easy method of control is tough.



Felder Rushing - by Gwen Ferland (AMG 2000)

On September 28th, I had the privilege of attending the annual Master Gardener state conference in Evansville. Five of us went: Mary Davis, Judy Baker, Sue Stuckman, Kathleen Cripe and I. If you ever have a chance to attend, please don't miss it. In fact, the 2009 conference is going to be in Elkhart. The committee is already hard at work to make it the best conference ever!

If you know me, you know I'm crazy about Felder Rushing. He was one of the main speakers on Friday. What a treat!

Felder Rushing is from Jackson, Mississippi where he shares his home with his wife Terry, children, Ira and Zoe, lots of wildflowers, critters and "yard art". He is a Masters graduate of Mississippi State University and is retired as his state's consumer horticulturist with the Extension Service. His gardens have been featured in magazines such as: Garden Design, Southern Living, National Research Journal, House and Garden and Landscape Architecture. Felder has written 14 gardening books, writes 2 weekly columns for the Clarion Ledger and twice monthly for the Memphis Commercial Appeal. He hosts a live call-in radio program once a week on Mississippi Public Broadcasting. He has been on the Discovery Channel, HGTV and has taken a TV crew to European Gardens. After all of these things and many, many more, he is one of the nicest guys you would ever want to meet. His website is: www.felderrushing.net/about/felder if you want to learn more about what he has done.

The first seminar was titled "Cottage Gardening by the Slice." Felder is a very laid-back southern gentleman and extremely funny.

His description of cottage gardening is: Freedom to grow what you like, where you like and how you like and is for people who want to get the most out of their landscapes, but don't mind being called "gardeners" by their envious neighbors. " It doesn't matter what you do, people are going to talk about you anyway." So garden so it pleases you.

Most cottage gardens usually have some common elements:

- ◆ No apparent design to outsiders, but best viewed from the inside-out. (from the house, not the street)
- ◆ A sense of enclosure (fence, gates, hedges etc.)
- ◆ Minimal lawn area. Sort of a "throw rug" effect defined by edged beds.
- ◆ Lots of seating and evidence of outdoor living and gardening. Tools, gloves pots where then can be reached easily.
- ◆ Strong vertical effects using trees, arbors and posts supporting vines.
- ◆ A great diversity of interplanted flowers for a year-round display of color, texture and fragrance. Use of heirlooms and pass-along's that is easy to propagate by seed or division.
- ◆ Potted plants in a wide variety of containers and hanging baskets.
- ◆ Few pesticides. Plants are chosen for resistance to pests and disease.
- ◆ An abundance of wildlife. These are attracted, fed and housed deliberately.
- ◆ Many hard features such as urns, statuary, birdbaths and yard art.

The main thing is to have fun growing plants for the love of it and to indulge your creative fantasies.

There are 2 things absolutely essential to any garden. A swing, (the longer the chain, the slower you swing), chairs and a wind chime or 2 or 3 or... This encourages slow gardening. Life has lots of pressures. Why include them in the garden? Slow doesn't necessarily mean lazy.



Lastly, Felder has written a Gardeners Bill of Rights.

1. You may have as many wind chimes as you can afford.
2. You may mispronounce plant names. (What a relief!)
3. You may have no grass at all or a little patch.
4. You have the right to prune or not prune. The plants don't care.
5. The worst people can do is talk about you.

The other thing I learned is there is a proud difference between "tacky" and "gaudy." Gaudy is when you do something a little edgy, but people think you know what you're doing and cut you some slack; tacky is when you just don't know any better, bless your heart. Felder states as a case in point the plastic pink flamingo. The first pair was patented in 1957 by Don Featherstone. He put things in perspective when he said that "before plastic, only the wealthy could afford poor taste."

If you ever have a chance to read Felder Rushing's books or hear him speak, be first in line. He is an amazing, funny man. He practices what he writes and talks about. And has fun doing it.

And here is the "rest of the story"
(by Judy Baker)

Although the education part was our primary reason for attending the conference, there were many "non educational" things going on too. The camaraderie with fellow MGs from all over Indiana is a big part of the experience. It is good to learn what other clubs are doing and how MMGA compares. When MGs get together, they already have a lot in common and you don't experience unfriendliness which sometimes happens in a crowd of strangers.

Our car trip was an event in itself. I'm sure you can imagine Mary, Kathleen, Gwen and me in a confined area for 6 or so hours each way. We got better acquainted with each other to say the least. We didn't want to stop to eat on the way down so we came prepared with food (as any self-respecting MG would).

We dined on homemade blueberry muffins, ham & Swiss sandwiches, grapes, apples, crackers and cheese. Sure made the trip seem shorter.

The weather couldn't have been nicer! The five of us walked along the Ohio River (which was just across the street from our hotel) after dinner on Friday night. The riverfront seems to be a well used walking/jogging place by locals as well as tourists and it is probably 3 miles long. We all enjoyed the relaxing walk after eating such delicious food all day. Earlier in the day, Sue Stuckman and I took a short walk along Ohio and Sue actually waded in the water!

The other favorite pastime was to visit the Silent Auction room where we bid on items like garden stones, books, garden tools, etc. We will do a Silent Auction in 2009 when we host the conference. Also, there were 2 rooms where local merchants sold garden or garden related items. Some gave a discount of which we all took advantage. We came home with lots more than we went with!

The host chapter, SWIMGA (Southwestern Indiana Master Gardener Association, Inc.), has about 300 members. They have a huge public plant sale each year and were selling many different varieties of plants at the conference. Some were unusual varieties, but most were more common. Their plant sale is a huge fundraiser for them each year. They also sold MG tee shirts, caps, and sweatshirts.

Master Gardener State Meeting Report by Mary Davis

As you can see from articles from other attendees, those of us who attended the State meeting had a great time, learned a lot, talked a lot and some of us spent a lot of money at the silent auction! (Ask Kathleen Cripe!) One presentation that was particularly interesting was by Rosie Lerner from the Purdue office on what counts for volunteer time. The quiz and answer key follows. Sharpen your pencil and try the quiz (no peeking) and then check your answers to see how up to date you are!

The answer "Volunteer hours if revised" means the hours could count if you revised what is being done. Two areas were of particular interest. The first is whether travel time for volunteer activities counts as volunteer hours. I was always told it did not, although I understand some volunteers have counted it. As you can see, the quiz says otherwise. I took it to the top - Andrew (who consulted with Jeff). They said yes, it does count as volunteer hours and you can go back and count hours as far back as you can determine if you haven't turned them in! (Remember Teresa needs your report by November 1!) **NOTE** this applies to **VOLUNTEER** hours only, not travel for education time. Thus the monthly meeting would not count, unless it involves volunteer time, like the July meeting setting up for the fair.

The second area of interest related to master garden activities. The discussion went further than the quiz. Basically, hours spent for such activities **DO** count. Rosie said it is even better if an educational component is involved and it need not be simultaneous with the gardening activity. Thus, all you PAR gardeners are covered. As you can see from the quiz, even driving to deliver the produce is volunteer time. Rosie did emphasize it would be good to have a card with each donation indicating it came from the MG garden. One thing however that does **NOT** count as volunteer or educational time is cleaning up after falling in the mud while visiting the greenhouse at the Evansville Zoo during the state meeting☺! I can't publish the name of our unfortunate traveling companion who suffered this ignominious experience as she threatened me! (I will give you a hint - Kathleen Cripe, Gwen Ferland and Judy Baker rode with me. It wasn't me, it wasn't Kathleen and it wasn't Gwen!) Finally, don't miss Rosie's top ten list! Next year's meeting is in Indy and you all know where '09's is - be prepared to volunteer to help!

Ruth Yeomans came to us via a most circuitous route (suspicious perhaps). She lives in Michigan, she trained in South Bend and then she showed up on our doorstep! Ruth is a retired schoolteacher and lives with husband Hank in Union. She works part-time seasonally at Kruse Farm Supply where she has been for 8 years. She has lived in the Michiana area for 37 years.

Born in Detroit, she met and married Hank in Kalamazoo and he got a job at Bayer (Miles then) in Elkhart. She has two sons, Andy, who lives in California and is the father of grandson Finn, and Tim who is single and lives in Denver. Daughter, Lisa, just got married this summer. Finn was born in September of 2006 and Ruth notes he just lives too far away! A Chesapeake Bay Retriever, Zoe, who is two years old, completes the family. She hunts, fishes, fetches and thinks she is a lap dog (88 pounds worth). In addition to gardening, Ruth enjoys reading, traveling (especially to see children and grandchild) and sewing. She enjoys decorative pots, perennials and landscaping and has certainly been active since she arrived - working on the Garden Tour, the Fair, the tree Sale, the Annual Dinner committee and the PAR Garden. She wanted to take Master Gardener training to help her at work and at home. Unfortunately, she wanted to take the training the year we didn't offer it. She has since audited many of our classes and was very glad she did. She likes the people in MMGA and enjoys working on committees and projects. She said everybody was friendly and it was fun to do the work. She and Annette Kozak are neighbors, friends and co-workers. They apparently spend a lot of time finding rotten birthday cards to send to each other!

Annette Kozak (transfer class of St. Joe Co. 2005) got here the same way as Ruth. Despite the fishy sounds of how this all happened, apparently it is their story and they are sticking to it! Annette says she is older and wiser than Ruth. In addition to working at Kruse, she is the wedding coordinator at Ruthmere Museum. She moved here from Chicago in 2001 when she retired. She has a daughter, Karen, and two sons, Raymond and Steven. All of the children live in the Chicago area. Among them there are four grandchildren, Nicole, Rachel, Luke and Mathew. An emphatic "no" was the answer to whether she has any pets. She enjoys traveling, reading and (as noted above) buying rotten birthday cards for her younger neighbor. She is interested in container gardening, the PAR (Plant a Row for the Hungry) garden, landscaping and perennials.

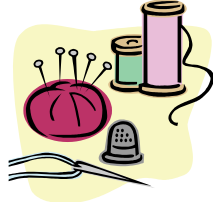
She too worked on Garden Tour and at the Fair, is on the Annual Dinner committee and the PAR garden. She said she always enjoyed gardening but felt like she didn't know anything. She also regrets she couldn't train in Elkhart, but has attended several classes here. She enjoys the never-ending learning in MMGA and socializing with a really neat group of people.

CALLING ALL ARTISTS!

The state meeting committee needs your help! We need a logo for our meeting. This will probably be used on tote bags and definitely will be used on our program, registration forms, etc. Our hope is to digitize it for machine embroidery, so it should be limited to two or three (at the absolute most!) colors. Following is a copy of the one used this year by Evansville (it was all black, except the star which was yellow), but you don't need to use Indiana – use your imagination! (A variety of fonts and print styles are readily available). There will be a prize for the winner! (It is very nice). Please submit your proposal to Mary Davis, Judy Baker or Gwen Ferland by November 30!



SEAMSTRESSES NEEDED!



The state meeting committee also needs seamstresses - actually the sewing is very simple so all skill levels can help. We are going to make our tote bags for the state meeting. We have instructions from Evansville for their bags (come and see at the October/November meetings) and we are going to do something similar. We also need a chairperson who is willing to head up this committee. In addition to helping with the sewing, they would help pick out material, organize a training session and distribute bag supplies to our sewers. Please call Mary Davis if you can help!

2007 Purdue Master Gardener State Conference

Speaker: Eva Shaw, Ph.D.

By: Kathleen Cripe

Eva spoke about healing with gardening in one of her books, *Shove It: Nature's Healing Plan*. If you are in need of healing, your garden could be one of your first stops.

A five year research study done in hospital rooms revealed patients felt more healing, and tolerated pain better if there was a garden scene picture to gaze upon in their room. The different pictures used in the study were:

1. A painting of a garden (flowers).
2. A painting of a forest.
3. Abstract art.
4. A blank wall.

The flower garden scene produced the best results of healing and higher tolerance of pain, closely followed by the forest scene. The blank wall came in third with the abstract art being least effective.

Another study called the Pig Pen Study was done in England and involved children. The younger the children are who play in the dirt/soil, the less respiratory problems they are diagnosed with. It was proven that half hour a day of playtime spent outside in the dirt and soil could decrease their respiratory medications they are receiving in half.

Gardening helps people more through the grief process and improves health. Meditation gardens increased in numbers after the 9-11 attacks and people sought out parks and garden areas in larger numbers. For myself just walking outside my door and looking at my garden area helps to melt the restlessness and stress away.

Eva stated one hour of serious gardening equals 1 hour of jogging. I was glad to hear this bit of information because jogging is not my thing but gardening sure is my thing to do.

Some of the ways Eva shared with us to share gardening healing with others are:

1. Share seeds by gluing a packet of seeds on a blank note card with a note inside.
2. Make postcards of your extra garden pictures and send to someone in the nursing home, and it will help them feel remembered. They will have something to share with others.
3. Make fresh potpourri from your garden and place in Ziploc bags to give away.
4. Make bookmarks with garden material and flowers.

Eva states in her book, *Shove It: Nature's Health Plan*, that she is a G-rated girl and she is not asking for a lifetime commitment from anyone, simply a bit of your time to help you feel better for a lifetime.



***NEWS FLASH! - ANNUAL MEETING &
SPRING SEMINAR UPDATE***

You know how discouraging it is to go to a seminar on Gardening - they show a picture of a gorgeous plant. Just as you are ready to write down the name, pull out a catalog and your checkbook, the speaker adds, "Too bad it won't grow here, it's only hardy to Zone 8." That won't happen this year - our spring seminar and annual meeting speaker is the Hoosier Gardener - Jo Ellen Meyers-Sharp. She is the gardening columnist for The Indianapolis Star. Her afternoon topic is Natural Natives for the Hoosier Garden. The evening topic is Woody Plants Worthy of Small Spaces. She will have her book on Indiana Plants available for purchase and autographing. Be sure to mark your calendars for March 8, 2008!

But that's not all - we will be providing "goody bags" to those attending with free magazines, seeds, catalogues, and surprises! Kathleen Cripe is busy working on these. (If you or your employer have some small items that you would like to donate - like pencils, magnets, post-it notes, notepads, keychains, etc., we would be delighted to include them - great marketing! We are going to assemble 300 bags.) We are also working on vendors - yes, you will be able to buy merchandise at the program!

The evening meeting is one you won't want to miss - delicious catering by Luchesse's! Spumoni and Master Gardener baked cookies for dessert! The Board has determined that the charge for the evening meeting will be \$15 per person.

Finally, we have two exciting contests to encourage you to sell tickets - whoever sells the most tickets (minimum of 10) to non-MGs will win a prize. I can't tell you what it is, but it will be very nice. Secondly, for anyone who sells more than 10 tickets (again to non-MGs), for each additional ticket you sell, you will get \$1 off your 2009 dues. Thus, if you sell 30 tickets, your dues are paid! (The first prize winner gets benefit of this too).

This event used to be well-attended with many non-MGs which gave the community an opportunity to hear a wonderful speaker. Let's make it great again! Invite your friends, co-workers, neighbors, people you meet on the street. . .oh, maybe got a little carried away, but you get the idea J!

Promotional flyers and posters are being developed. Tickets will be available at the November meeting, so you can use them for Christmas gift-giving and sales to others who want to also. Stay tuned!

Oh, by the way, if anyone wants to be on the committee, we could use more help! Call Mary Davis. Our next meeting is October 29th at 7:00 p.m. at Mary's home. Home-made muffins will be served J!

***A note from the Community Garden
Plant a Row for the Hungry Committee:***

Suzanne Pedler has tallied up poundage and prices from Martins Grocery (estimated from peak times this summer). A special thanks to Tom Labrum Produce Manager at the Cobblestone location.

- * Tomatoes, .99# X 459=\$454.41
- * Herbs, \$2.49 for 4 oz x 23=\$229.08
(Sue Stuckman will love this one.)
- * Swiss Chard, \$1.79# x 92=\$164.68
- * Leeks, \$1.49# x 20.5 = \$305.45
- * Green Beans, \$.99# x 47 = \$46.53
- * Peppers (Hot) \$.99 x 37.75 = \$37.37
- * Peppers (Bell) 3 peppers \$.99 x 37.75# = \$24.92
(figured 2 peppers = 1#)
- * Okra, \$1.49 x 10# = \$14.90
- * Cucumbers, 3 for \$.99 x 146# = \$96.36
(figured 2 cucumbers = 1#)
- * Squash \$.59 x 126# = \$74.34
- * Cabbage, \$.44 x 26# = \$11.44 (estimated 1# each)
- * Beets, \$1.99 bunch x 6# = \$23.88
(estimated 2# each bunch)
- * Onion, two bunch for \$.99 x 19# = \$38.00
(estimated 4 bunch = 1#)
- * Potato Yukon Gold, \$2.99 for 5# X 30# = \$17.94
- * Kohlrabi, \$1.99 for 3 x 45.5 = \$90.55
- * Peas, \$2.50# x 18# = \$45.00

- * Arugala and Leaf Lettuce, \$1.75# x 11 = \$19.25
- * Radish, \$.99 x 24 = \$23.76
- * Collards, \$.99 x 79 = \$78.21
- * Carrots, \$.69 x 5.3# = \$3.66

Total pounds = 1261.45

**Dollar Value Contributed by Master Gardeners for
Plant A Row For The Hungry = \$1,799.73**

The committee wants to thank everyone who donated their time and muscles to make this effort of time and money well spent. Plus a good time was had by all. Please consider being on the Community Garden committee in 2008. It is fun and quite a learning experience. And humbling when you see how people in dire circumstances appreciate the produce we provide. This is Master Gardening in its purest form. ***Helping Others Grow.***

~ Gwen Ferland as reported by Suzanne Pedler

**No two gardens are the same.
No two days are the same
in one garden.
Hugh Johnson**



The Extension Office has a Tupperware 12-inch round container that was found in the kitchen area. On the bottom of the container it says, "This Tupperware product is from the kitchen of Diana Weldy." If this is yours, please let us know.

~ Thank You ~

MICHIANA MASTER GARDENERS ASSOCIATION
ELKHART COUNTY
Mission Statement



The Michiana Master Gardeners Association is a not-for-profit educational organization dedicated to the improvement of the community. Members of the Association have completed the requirements of the Master Gardener Volunteer Training Program, working in affiliation with the Purdue Extension Service of Elkhart County. Its specific aim is to improve the quality of life in the community by providing information and technical assistance in the area of home horticulture through the use of trained and certified volunteers.

The greatest gift of the
garden is the restoration of the
five senses
~Hanna Rion

PURDUE
UNIVERSITY

ELKHART COUNTY EXTENSION OFFICE
ANDREW WESTFALL
EXTENSION EDUCATOR
AGRICULTURE/NATURAL RESOURCES
17746-E CR 34, GOSHEN IN 46528
(574) 533-0554
OCTOBER 2007