

PURDUE

U N I V E R S I T Y

PURDUE UNIVERSITY COOPERATIVE EXTENSION SERVICE

Elkhart County

Elkhart County 4-H Fairgrounds

17746-E County Road 34

Goshen, IN 46528-6898

NON-PROFIT ORG.
U.S. POSTAGE
PAID
PERMIT NO. 42
GOSHEN, INDIANA
46528



The Michiana

Broadcaster

"Helping Each Other Grow!"

Michiana Master Gardeners Association

June 2009

Index	1
Calendar / A Look Ahead	2
From The Presidents Desk	3-4
Splinters—from the Board, submitted by Jim Barre	5
Garden Tour 2009 VOLUNTEER INFORMATION	6
MG Bio, Mary Moore, submitted by Mary Davis	7
General information	8
Tree Sale 2009, submitted by Heidi Zavatsky	9-10
State Conference 2009 Bits & Pieces, submitted by Judy Baker	11-12
Inside the Extension Office, submitted by Kate Rink	13-16
Garden Tour 2009 Announced..	17-18
Ted Ellis Organic Fertilizer Recipe, submitted by Heidi Zavatsky	19-20
MG Recipe Box, Rhubarb Custard Pie, submitted by Suzanne Pedler	21
From the Editors Desk	22

CALENDAR



A Look Ahead

June 30	7pm	"Invasives" by Rita Henehan
July 11		Garden Tour 2009
July 13	6pm	Fair setup & pizza party (volunteer hours)
Aug 25	6:30pm	Garden Tour Appreciation Dinner, Reservations required. Email bakerds@comcast.net
Sept 10 -12		Indiana State Master Gardener Conference; First Baptist Church CR 17 Bristol IN
Sept 29	7pm	"An evening of Master Gardener fun"
Oct 27	7pm	"Garden/Nature Photography" TBA
Nov 17	6:30pm	"Thanks for giving carry-in & food drive" NOTE: NEW DATE
Dec		NO MEETING, MERRY CHRISTMAS!

A Note From The Presidents Desk



Well, after two nights of covering plants and two mornings of washing the frost off of the strawberry blossoms, it appears as though spring has once again arrived. The sun is shining and there is a little warmth in the air and hope for a great growing season is restored. In just twelve days June will be here and the largest portion of planting should be done. I hope I make it.

The "Friends of Extension" award bestowed upon the Michiana Master Gardeners Association by the Purdue Extension – Elkhart County, was put on permanent display in the Master Gardener Office today. Each year Purdue Extension – Elkhart County recognizes individuals or organizations that have been helpful and supportive of the Purdue Extension Service efforts to provide educational programs and materials that focus on the specialties of Consumer and Family Science; 4-H Youth Programs; Agriculture and Natural Resources; and Economic Development. It was noted the Michiana Master Gardeners Association

supports the Purdue Extension Service in many ways, including offering horticulture seminars for the general public, organizing a popular Garden Tour in the summer, and working with community gardens in Elkhart. In recent years the Michiana Master Gardeners Association has operated a hotline in the Extension Office from April through September, answering approximately 1,000 calls a year from people with questions about plants. It is a great honor for our organization to have been named the 2008 "Friend of Extension" recipient. I personally wish to thank each and every member of the Michiana Master Gardeners Association for the contributions they have made in fulfilling our commitment of service to our community.

PLM



In my garden there is a large place for sentiment. My garden of flowers is also my garden of thoughts and dreams. The thoughts grow as freely as the flowers, and the dreams are as beautiful. ~Abram L. Urban

Splinters from the Board

April and May, 2009

Highlights of the April 20 MMGA Board meeting include:

In our discussion with Jeff Burbrink last month, he stated that during events such as Garden Tour, Fair, Ag Hall set-up and other events, when we use non-members such as friends and spouses to fill our manpower needs, our **insurance policy** covers them as well as MMGA members.

It was reported that it has been agreed that every Tuesday and Thursday has been designated a "work day" at the **Community Garden**.

The **Speakers Bureau** has received 32 requests for speakers! This is only for the period from January through September, 2009. Three Master Gardeners were on the WNIT call-in show about gardening called "Ask the Expert" on 16 April.

Final figures are not in yet but we had a successful **tree sale**. HOWEVER, IT WAS ESPECIALLY DISAPPOINTING THAT ONLY A SMALL NUMBER OF PEOPLE HELPED, ESPECIALLY ON FRIDAY.

A motion to give Purdue \$2000 per year on an ongoing basis, to be used for a **scholarship** for an Elkhart County horticultural student, was APPROVED unanimously.

Highlights of the May 18, 2009 MMGA Board meeting :

Committee reports were heard –

Net profit to MMGA from the **Tree Sale** was \$2203.47.

All is going smoothly in getting ready for the **State Convention**.

Registrations are coming in.

Garden Tour preparations are on schedule.

The **Community Garden** has been planted.

The irrigation system for the **Quilt Garden** was being installed while the Board was meeting. Planting will be May 22.

There were no major decisions requiring a motion today.

Minutes recorded by Jim Bare, MMGA Board Secretary

Garden Tour 2009

Volunteer Information

Cookies, Plants and Boutique Item Drop Off

Volunteers providing cookies, plants or items to sell at the Boutique should drop them off at the Hospitality Center **Friday July 10 between the hours of 8 a.m. & 1 p.m.** The Hospitality Center is located at Heritage Intermediated School, 57697 Northridge Dr., Middlebury. It is important that items arrive on Friday. If you are unable to drop them off please call **Liz Hess 825-4855**, ehess@egh.org or **Tracie Belcher 269-699-5018**, thelcher44@comcast.net to make arrangements.

General Information for tour day

If you have a cell phone, please have it available

You will need a chair and may be asked to bring a card table

Wear your MG name tag the day of the tour. If you have a MG hat, shirt or apron wear it as well if you like.

The Garden Tour is a rain or shine event. Be prepared for either. Consider bug spray, sun block and umbrella.

If you are working at the Hospitality Center and do not have an assigned area, see Liz Hess or Gwen Ferland upon arrival.

For any questions between now and the tour contact:

Liz Hess, 2009 Garden Tour Chair 574-825-4855

Gwen Ferland, Co-chair 574-264-4356

Linda Sinon, Volunteer Chair 574-293-6172

Marilyn Horvath, Plant ID Chair 574-522-6889

Tracie Belcher, Merchandising Chair 269-699-5018

MASTER GARDENER BIO

MARY MORGAN

Mary has moved around a lot—she started out in Chicago, moved to Indiana as a child and after marrying she and her husband, Gilbert have lived in Michigan, Minnesota, Wisconsin and finally back to Indiana. They are both retired now. He was a Case IH salesman and she worked at ADEC in the supported employment program. Their only son died in a motorcycle accident and they have one 10 year old grandson, Zachary. At home they have a rat terrier named Sparky and 18 Nubian goats. The goat population fluctuates and they have a lot of baby goats at the present. Nubian goats are the ones that have long floppy ears and are dairy goats. Mary milks the goats and they have rich, creamy milk. She enjoys them as they all have such interesting personalities. She uses the milk for personal use and also sells it. If they don't have sufficient sales, they usually buy a calf and feed it the extra milk. Mary said she planted trees and flowers wherever they lived and she always thought master gardener training would be a good program, so in 2006 she took the class. She said she enjoyed the training and learning about different plants, but thought the name should be Mastering Gardening, since she isn't sure anyone is ever really a Master Gardener. She enjoys meeting others with similar interests and helping others learn about gardening. She is planning to be at the State meeting to help further her learning. She enjoys wild flowers, native trees and ornamental plants and has worked on the plant ID committee for garden tour.

Please email your articles, photos, meeting dates, recipes, and other information to alyskidder@gmail.com.
Please use the subject line "Broadcaster".

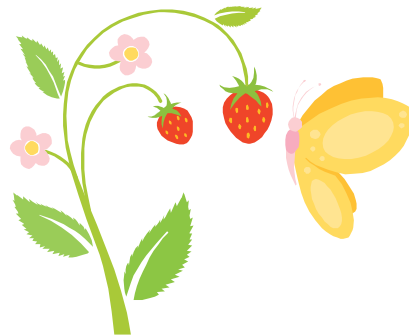
Please submit all articles by the 20th of each month for the next months broadcaster.

If using regular usps mail, send to

20117 CR 2

Bristol IN 46507.

Thanks!



Don't forget to record your volunteer and Training hours on the "Volunteer Hours & Training Report Form" and turn it in at the Extension Office to receive credit for your hours!

Tree Sale 2009

Well....another year, another tree sale! As I think back on the past year, I realize what a great bunch of people I've had the privilege of working with on the tree sale. The committee has stayed the same with the exception of losing Alys Kidder and gaining Kate Rink. Anyone is welcome to join the fun. It started several years ago with such a simple concept that was a win win situation for SWCD, MMGA and the people of Elkhart County. Nancy Brown and crew... Jenny, Eric, Jason, and Lynette and the MMGA committee of Earl Bailey, Mary Hesser, Judy Baker, Ann Overmyer, Mayrea Reusser, Jim Maddux, Vickie Estep and Nancy Brown worked very hard to make it a success. When we first started out, we were "winging it" and now we have the sale procedures down pat.

Of course there's always room for improvement. We have three meetings during the year before the prep days and sale pick-up day. At the wrap meeting, we go over what worked/didn't work and pick out species for next years' sale.

This year the biggest sellers were no surprise... arborvitae, white pine and blue spruce; and the butterfly bush was such a big seller, we're keeping it on next years' list too.

The numbers are in. Our total sales were \$11,718.60. Total expenses were \$8,046.15. Our income from the sale was \$3,672.45. MMGA made \$2,203.47 and SWCD made \$1,468.98.

Kudos to all who helped make this another successful year.

Even though we were short handed on Friday, we made it work. Usually we have four work stations and we worked with three stations this year. We definitely need everyone in the MMGA to help make this successful and I hope next year with Vickie Estep and Nancy Brown chairing the event, it will be another successful sale.

Look for next year's tree brochure in the fall...we've added some new species. I hope you'll answer the call to serve on the committee or work on the sale... we have fun, meet new gardeners, get new recipes and gardening tips and catch up on news of what's happening in MMGA. Thanks again to all who helped make it a great sale!

Heidi Zavatsky '00



2009 State Conference Bits and Pieces

- Only a little over 3 months until the conference!!!
- **Muscle power needed!!!** We will need some help to move a number of tables from the Fairgrounds on Wednesday (9/9) late afternoon/early evening into a trailer for transport to First Baptist Church. We will then need HELP to unload that trailer at 7:30 a.m. on Thursday (9/10). We cannot unload on Wednesday evening because FBC has services and classes that evening. We will also need help loading them back into the trailer after the conference ends at noon on Saturday (9/12) and unloading them at the Fairgrounds.. Email/call **STEVE ARNOLE** at twosailors@bnin.net/ 831-6828 if you can help.

Remember to register before June 30 to get your early bird discount. Registration forms were in the May **Broadcaster**. They may be found online at www.michianamastergardener.com We will also have them at MMGA monthly meeting. The absolute deadline to register (no exceptions) is **JULY 31st**. Register NOW and any discount you earn by way of volunteer hours will be refunded to you right after the Conference.

- We want everyone to get a chance to **VOLUNTEER** and earn hours toward their discounted registration fee. We need help 8:00 am to 5:30 pm on Thursday 9/10, 8:00 am to 5:30 pm on Friday 9/11 and 8:00 am until we have completed teardown and cleanup on Saturday 9/12.. There will be a bright orange sign-up poster at the monthly MMGA meetings.

Following is a list of the committees and their chairs for you to contact and volunteer your time:

ADVERTISING	Heidi Zavatsky
CATERING COMMITTEE and Judy Baker	Ruth Yeomans
EDUCATIONAL EXHIBITS	Earl Bailey and Marilyn Miles
MERCHANDISE	Doris Kehr
PROGRAM COMMITTEE and Penny Stroup	Kathleen Cripe
SILENT AUCTION & DOOR PRIZES	Gwen Ferland and Suzanne Gray
VENDOR COMMITTEE	Sue Stuckman and Teresa Evans

If any of you have items for the Silent Auction or for Door Prizes, please contact Gwen Ferland at eferland.11@verizon.net

If you have any questions or concerns about the conference, please email either Judy Baker bakerds@comcast.net or Mary Davis davis.davispc@verizon.net .

See you next

Judy Baker



INSIDE THE EXTENSION OFFICE

Submitted by: Kate Rink

We had 17 calls this month in the Master Gardener room. A big jump from three last month. People are noticing things going on in their yard and property. Some of the questions were repeats from last year but we also had some new questions. It is always fun to try and diagnose an unfamiliar problem.

One client called in wanting to know if coco bean mulch is poisonous to dogs. She had scattered this on her flower beds and the neighbor's dog came over and ate some. Do dogs like chocolate as much as humans? It's that wonderful, chocolaty smell that's so inviting. It's like scattering Hershey bars all over the flower beds! Flowers and chocolate go together, right? Not for cats and dogs. Coco bean mulch contains a chemical called Theobromine. This is toxic to dogs and cats. Although, it may cause a sick feeling, they would have to eat a large quantity to actually die. Very few reported deaths have occurred from animals eating coco bean mulch.

Another dog question came in but with a different twist. It seems in the Fall of 2007, the client burned a newspaper with puppy urine and feces. The ashes were applied around plants in the yard. In 2008, the plants did not grow well. Thinking the problem came from the burned feces ashes, they called the Extension Office for advice.

The MG advised the client to try replacing the top soil around the plants that had been affected. Also amending the soil with a, nutrient rich compost, was recommended to give the declining plants a boost. Time will tell if the newspaper ashes were actually the problem.

Speaking about toxicity, a call came in concerning walnut tree toxicity. A client called in wanting to plant a garden but had heard that you can't plant a garden close to a walnut tree. She wondered what would be the safest distance to be able to do this. Our Master Gardener advised her to keep a minimum distance of 50' from the tree to assure garden plants not being affected by the juglone toxin.

This toxin dates back to Roman times, when a poisoning effect of walnut trees on "all" plants was exhibited. More recent research has determined the specific chemical involved and its mode of action. Those garden plants most sensitive to juglone are cabbage, eggplant, pepper, potato and tomato. Plants tolerant to juglone are lima beans, snap beans, beets, corn, onions and parsnips.

Raised beds afford a means of protection. However, the bed must be constructed in such a way as to minimize tree root penetration into the raised bed portion. Care must then be taken to keep the beds free from black walnut leaf litter or nuts. If a garden is separated from a black walnut tree by a rock wall, driveway, or other physical barrier, then root extension growth in the garden area may be limited and juglone toxicity problems minimized.

These options were discussed with the homeowner. She will then decide whether she will have enough room to plant a garden and be safe in her plan as well.

A bird enthusiast wanted information on the possibility of erecting homes for Purple Martins and Blue Birds. He wondered if it was too late in the season already to put these up. He was advised that it is not too late and was provided with our Bluebird expert's name, Sheldon Miller, for additional information.

This client also wanted to know about putting horse manure on his garden. He had gotten compost at the Environment Center in the past but they are currently out. He wondered if this would be an alternative. He was advised that as long as the manure had been composted for 6 months to a year, it should be fine worked into the garden soil and not burn healthy plants..

A mother, concerned for her children playing outside near a yellow jacket nest, called for help with the proper techniques of disposal. Our MG, advised a plan of action. She advised waiting until dusk or dark when activity has slowed down considerably. Use a flashlight and shine it on the nest. Immediately, spray directly into the hole, staying about 6-8 feet away. If the yellow jackets emerge, stop spraying and RUN! Repeat this process nightly until no signs of activity remain.

This could be an educational learning process for the children. Upon assurance that the nest is inactive, knock the nest down for observation. This could be a good learning tool. Not only is it an interesting thing to look at with its papery, cone shape appearance but the realization, that observance and respect of their home should be considered whenever possible.

There you have a sampling of some of the questions that came in this month. Other questions pertained to lawn care, shrub leaf spot and other diseases with some problems being specific to the cool, wet weather we've been having. Next month, it'll probably be a whole new set of problems! That's OK, that's what we're here for!



Gardening is about enjoying the smell of things growing in the soil, getting dirty without feeling guilty, and generally taking the time to soak up a little peace and serenity. ~Lindley Karstens

2009 GARDEN TOUR ANNOUNCED

Goshen, Indiana – The Michiana Master Gardeners Association announces its 13th annual Garden Tour to be held in the Middlebury area July 11, 2009, with homeowners opening their gardens from 10:00 a.m. to 5:00 p.m. Included in the tour's 10 garden locations will be Krider Gardens, and Nipsco Arboretum. Among the many garden features and landscape styles will be native plants, wooded paths, waterfalls, wildlife habitats, heirloom vegetables, and a spectacular array of flower gardens throughout the tour, just to mention a few.

The "Hospitality Center" for the 2009 Garden Tour will be located at Heritage Intermediate School, 57697 Northridge Dr, Middlebury, and will be open from 9:00 a.m. to 1:00 p.m. The hospitality center is the hub of activity featuring established plants that the Master Gardeners have potted from their own stock to be sold at affordable prices. A Garden Boutique with garden art such as birdhouses, wreathes, painted windows, garden signs and decorative pots will be available. Numerous educational displays and presentations will also be at the hospitality center. Light refreshments will be awaiting guests as they visit the educational displays and demonstrations.

Tickets are \$10 per person (presale) through noon on Friday, July 10. Elkhart outlets are: Linton's Greenhouse, Martin's Seed & Supply, Sautter's Greenhouse, Westrate Landscape Garden Center, and Martin's Pet & Garden Center. Goshen outlets: McIntosh Greenhouse & Garden Center, Prairie Trail Farms, Elkhart County Extension Office. Other surrounding locations to purchase tickets are: Kruse Farm Supply - Bristol, Varns & Hoover and Dollar Daze - Middlebury, Pro Hardware - New Paris, McKinley Terrace Garden Center - Mishawaka. Tickets may also be purchased from any member of the Elkhart County Michiana Master Gardeners' Association or by mailing a check or money order made payable to Michiana Master Gardeners' Association, c/o Purdue CES Elkhart County, 17746-E County Rd 34, Goshen, IN 46528.

Tickets are limited, so get yours early. If tickets are still available the day of the Garden Tour, they can be purchased for \$12 ea at the "Hospitality Center." Michiana Master Gardeners Association holds this event in cooperation with the Purdue Cooperative Extension Service. Proceeds from ticket sales will go toward educational opportunities in Elkhart County communities.



TED ELLIS RECIPE FOR ORGANIC FERTILIZER
(Advanced Master Gardener)

"I garden using raised beds & organic fertilizer. Experimenting over the years, I developed a blend using six organic components. It is a general all purpose fertilizer. The blend was tested by a soil lab & resulted in having a typical (N-P-K) Nitrogen, Phosphorus, Potassium ratio of about 11-11-11, which is comparable to commercial 10-10-19 synthetic fertilizer."

"Commercial fertilizers are quick acting & require repeated use & do nothing for soil conditioning. Organic fertilizer releases nutrients into the soil slowly, which contributes to soil conditioning, encourages beneficial soil microorganisms & earthworms."

Thanks to Heidi Zavatsky for sending this recipe in. Ted was a great gardener, and I am sure many of us will put his fertilizer to good use!

Organic Fertilizer Recipe

8.0 Cups Alfalfa Meal (used as livestock fee supplement)

N 2.5, P 0.2, K 2.0

6.0 Cups Blood Meal (processed from livestock)

N 12.0, P 0.0, K 0.0

6.0 Cups Bone Meal (processed from livestock)

N 1.0, P 11.0, K 0.0

4.0 Cups Green Sand (mined from natural deposits of Glaucanite)

N 0.0, P 0.0, K 0.1

1.5 Cups Kelp Meal (processed from ocean kelp)

N 1.0, P 0.5, K 2.5

8.0 Cups Soybean Meal (used as a livestock feed supplement)

N 7.0, P 0.5, K 2.3

This recipe will take about two to three weeks to begin working.

MG RECIPE BOX

Just tried a new recipe for Rhubarb Custard Pie and it is a winner. Other recipes end up with a soggy crust. The secret is in the "cream". You might question it since you add water to the mix, but trust me it stays put in the custard mix.

2 cups finely chopped rhubarb

2 eggs

1 1/4 cups white sugar

1/2 cup water

2 Tablespoons flour

1/2 teaspoon vanilla

1/2 cup cream

Place rhubarb in an unbaked 9 inch shell. Mix together sugar, flour, cream, eggs, water and vanilla.

Pour over rhubarb and bake at 400 degrees for 10 minutes. Reduce heat to 325 and bake for 35-40 minutes longer until set. You may sprinkle with nutmeg.

The recipe was given to me by Marlene Hartman.

Enjoy!

Suzanne Pedler

From the Editors Desk

First of all, thank you to the following for submitting articles to this months Broadcaster:

Paul Miles

Jim Barre

Linda Sinon

Mary Davis

Kate Rink

Judy Baker

Heidi Zavatsky

Suzanne Pedler

Please send your articles to alyskidder@gmail.com by the 20th of each month, for the following months Broadcaster.

Thank you

Alys Kidder



Michiana Master Gardeners Association
Elkhart County



Mission Statement

The Michiana Master Gardeners Association is a not-for-profit educational organization dedicated to the improvement of the community. Members of the Association have completed the requirements of the Master Gardener Volunteer Training Program, working in affiliation with the Purdue Extension Service of Elkhart County. Its specific aim is to improve the quality of life in the community by providing information and technical assistance in the area of home horticulture through the use of trained and certified volunteers.

PURDUE
UNIVERSITY